

Adjust the Mouse Rotating and Zooming Functions

Published Date: 02-28-2011

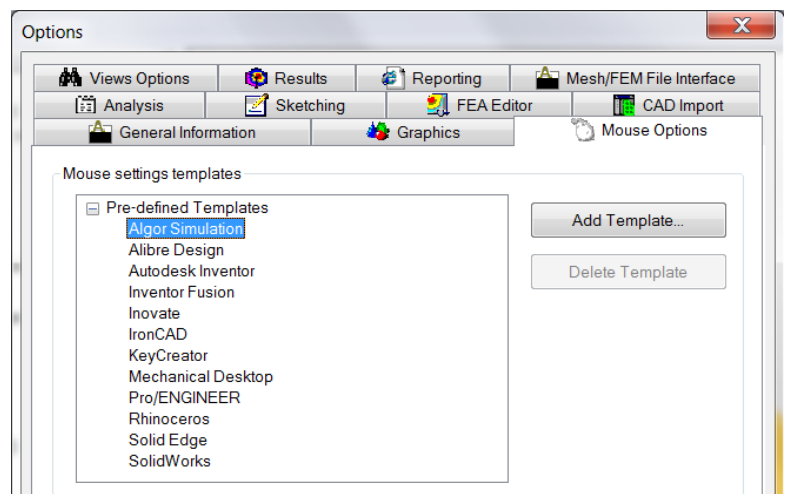
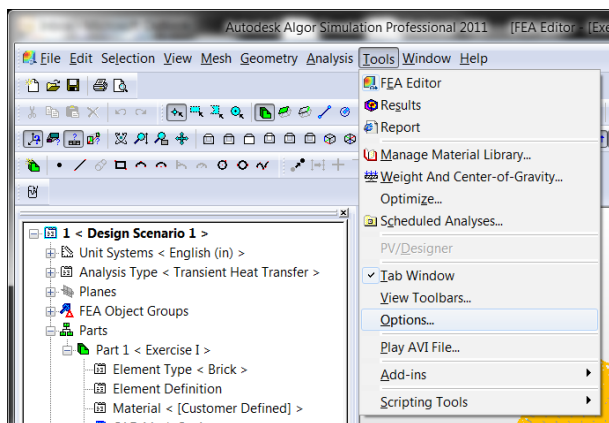
Applies to: Autodesk Algor 2011

Challenge

How can I change how I like my mouse to rotate zoom in/out, and pan much like I would with Inventor, or Solidworks, or even Pro-E.

Solution

You can change the Mouse options so that you will be able to rotate pan and zoom in/out much like your current 3D CAD software. Having a model in Algor, go to **Tools > Options > Mouse Options** and select the presets you would like to use. Make your selection and click **Apply** and/or **OK**.



For more technical solutions visit www.ketiv.com/support or call 866.465.3848.